

# KLINGER® Wall Collar MK GII



KLINGER® Wall Collar MK GII  
In the case of water pressure, the new  
KLINGER® Wall Collar MK GII protects  
against moisture escaping or penetrating  
along the smooth pipe surface.  
Safe, Efficient, Simple Fast, Optimized,  
Environmentally Friendly

KLINGER –  
Global leader in sealing

# KLINGER® Wall Collar MK GII

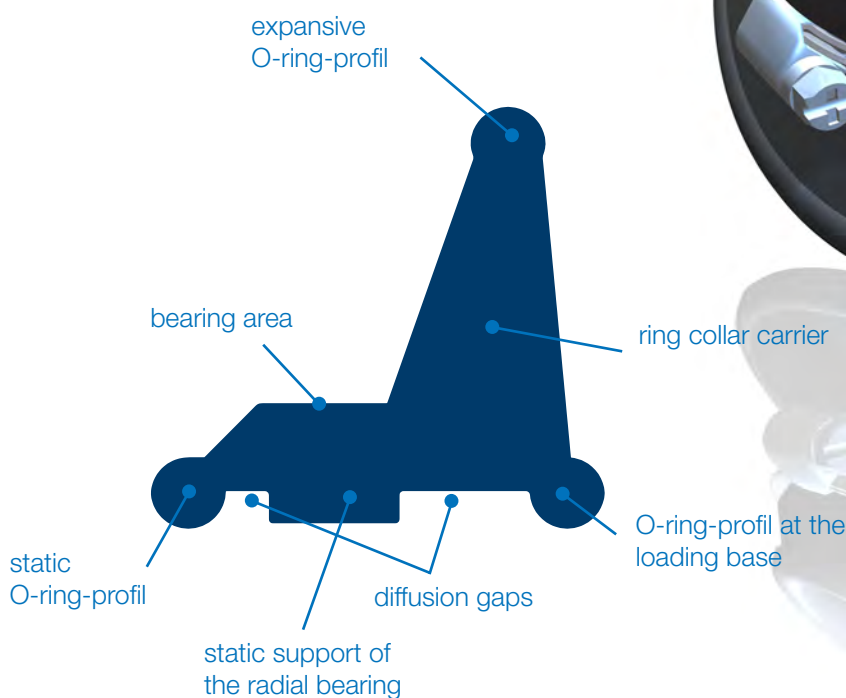
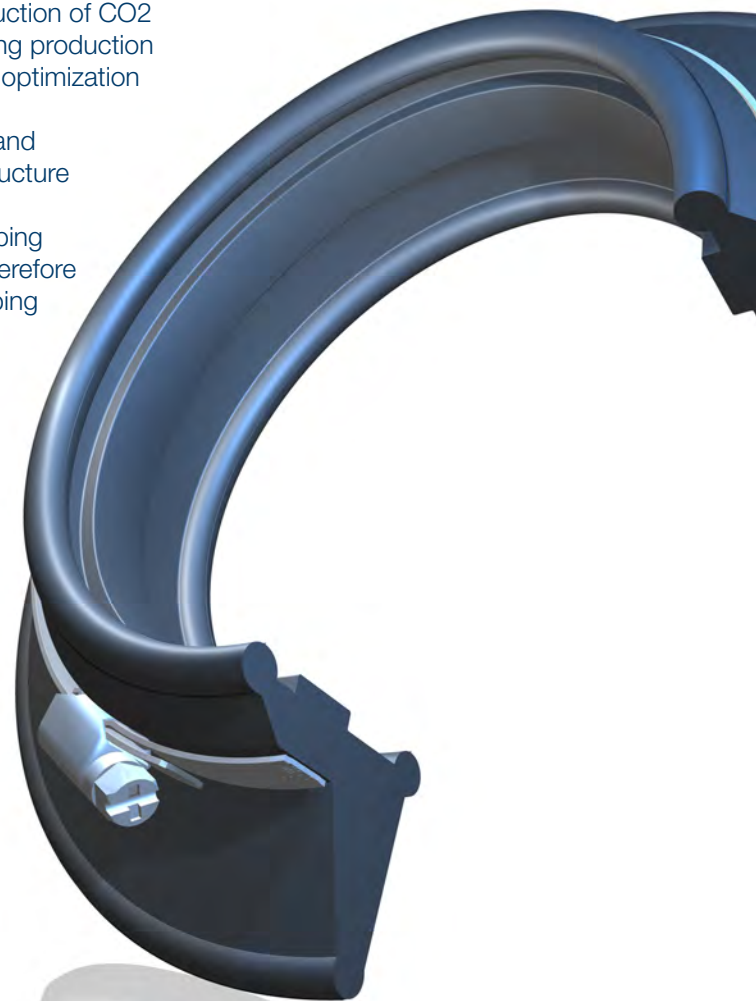
KLINGER GmbH continually strives to develop innovative and resource-efficient products.

Wherever smooth pipes made of various materials such as plastics, stoneware, cast iron, or stainless steel are routed through concrete walls, floors, or even ceilings, the transition from the pipe's outer diameter to the surrounding concrete must be reliably and permanently sealed.

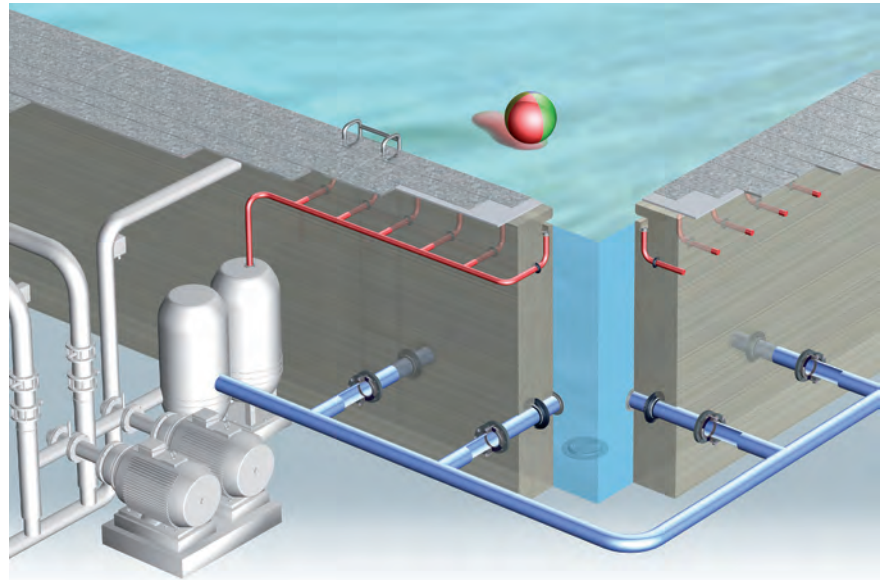
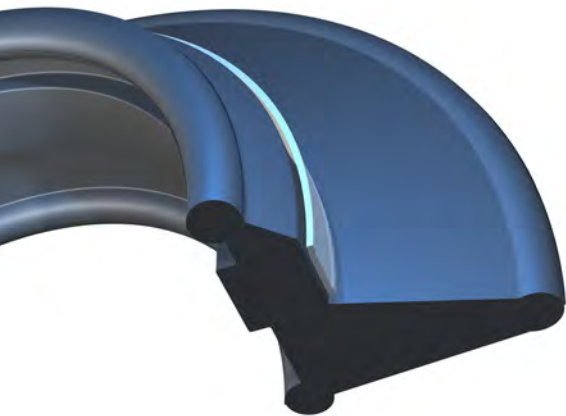
## Facts

Climate protection and functional improvement in one product:

- » 10 bar/100 meter water column tightness regardless of installation direction, tested by MFPA Leipzig GmbH (test reports PB 5.1/18-005-1 and 5.1/19-491-1)
- » Significant reduction of CO2 emissions during production through profile optimization
- » Highly flexible and tensionable structure
- » Only one clamping bearing/and therefore only one clamping clamp required



# KLINGER® Wall Collar MK GII

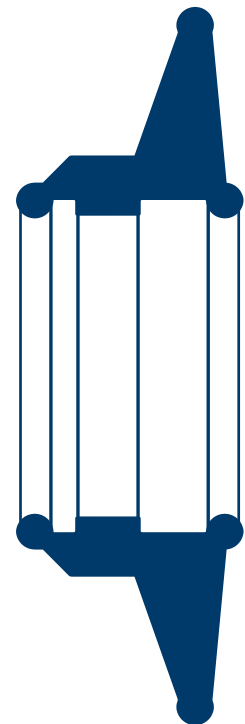


The new patented KLINGER® Wall Collar MK GII (German Patent No. 10 2016 013 287) not only offers the most efficient and environmentally friendly option for professional sealing, but also, thanks to its modern and optimized design, maximum clamping force for sealing the pipe's outer diameter and highly rubber-elastic behavior during installation.

Even KLINGER® Wall Collar MK GII with large dimensions can be retro-fitted relatively quickly and easily.

Regardless of whether the KLINGER® Wall Collar MK GII needs to be installed on swimming pools or in groundwater basins, a pressure-tight seal is easy to create on-site and depends on:

- » Cleanliness during installation (pipe surface and wall collar in perfect contact condition)
- » Pressure-bearing and structurally stable pipeline
- » Installation of the clamp over the clamping bearing in a hand-tight condition (no special tools required)
- » Compliance with the specifications for the processing time and compaction of the concrete used (construction-side requirement!)
- » All-round cover with compacted concrete of at least 30 mm



# KLINGER® Wall Collar MK GII

## The dimensions at a glance

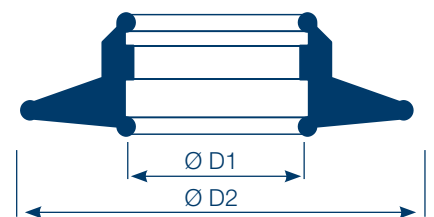
The KLINGER® MK GII wall collar is manufactured from EPDM as standard. Other materials are available upon request and according to specifications.

We also manufacture wall collars according to your specifications. Please specify the exact outer diameter of the pipe used in millimeters [mm]. There is no restriction on the nominal diameter (DN).

The KLINGER® MK GII wall collar is supplied with a stainless steel clamp as standard. However, other materials such as galvanized steel, plastics, etc. can also be configured upon request.

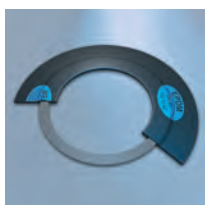
OD Ø	DN	D1 Ø	D2 Ø
25	20	22	102
32	25	29	109
40	32	38	118
50	40	48	128
63	50	60	140
75	65	71	151
90	80	84	164
110	100	105	185
125	125	120	200
140	150	135	215
160	150	154	234
180	200	175	255
200	200	195	275
225	250	215	295
250	250	245	325
280	300	275	355
315	300	310	390
355	350	352	432
400	400	395	475

OD Ø	DN	D1 Ø	D2 Ø
450	450	442	522
500	500	490	570
560	600	547	627
630	600	613	693
710	700	690	770
800	800	775	855
900	900	870	950
1000	1000	965	1045
1200	1200	1155	1235
1400	1400	1345	1425
1600	1600	1535	1615
1800	1800	1725	1805
2000	2000	1915	1995



**KLINGER® offers you excellent sealing products for all applications**

KLINGER® KGS GII



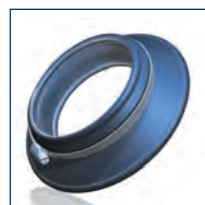
KLINGER® KGS/TK



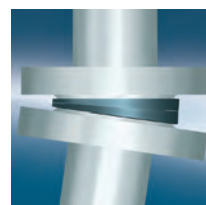
KLINGER® KGS-Flon



KLINGER® KGS/MK



KLINGER® KGS/VD



KLINGER® KGS



**Certified according to DIN EN ISO 9001:2015**

Technical changes reserved.  
Issue: 07.2025

KLINGER GmbH  
Rich.-Klinger-Straße 37  
D-65510 Idstein

Tel +49 (0) 6126 4016-0  
mail@klinger.de  
www.klinger.de

